

FAST pro 4000

Mail Control System

The FASTpro 4000 system is a scalable Ink Jet and stacker control system that can be upgraded and configured to include Ink Jet printing at two locations as well as feeder control for up to 10 feeders.

The FASTpro 4000 utilizes proven and robust FASTpro software and is ideal for post trimmer printing on mid-range saddles stitchers and perfect binders as well as offline mailers and wrappers.

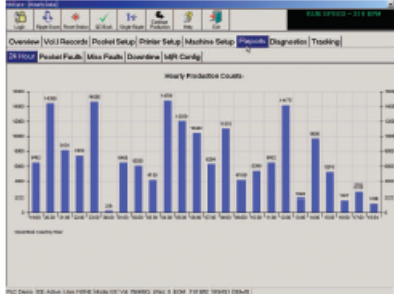


FASTpro 4000 – Features

- > Scalable platform, buy what you need now for your application, expand as your needs change
- > Touch sensitive operator screen and optimized software for fast intuitive make-readies
- > Robust mail control software with comprehensive reorder capabilities
- > Meets all current postal controller requirements including carrier route reporting
- > Optional service package protects your software investment
- > Offline Make-ready feature to maximize production efficiency
- > Detailed production reporting and tracking by job and shift
- > Volume Queue for scheduling production data for specific jobs or versions
- > Search wizard for to locate specific subscriber records including record with most lines and longest line
- > Save make-ready information and configurations to accelerate make ready on future jobs
- > Interface to Industry Standard Printers
- > Optional Paper Label Software Package

FAST pro 4000

Mail Control System



> TECHNICAL SPECIFICATIONS

CONTROLLER:

Hardware:
Industrial PC
High Performance Siemens S7 Soft PLC
for machine control

Enclosure Dimensions:

20" x 26" x 65"

Power:

115 / 240 VAC 50 / 60 HZ

I/O CONTROL NODE:

Hardware:
Siemens ET200S I/O Modules

Enclosure Dimensions:

8" x 24" x 5"

PRINT STATION MODULE:

Hardware:
Equinox Ethernet Communications
115VAC outlet to power printer

Enclosure Dimensions:

12" x 12" x 36"

Power:

115 VAC 60 HZ